

# 2023-2024 JUMP START ACADEMIES

**TAKE COLLEGE CLASSES WHILE YOU'RE STILL IN HIGH SCHOOL AND GET BOTH HIGH SCHOOL AND COLLEGE CREDIT.**

You can take all kinds of college classes from anatomy to welding and everything in between. Whether you're aiming for a Bachelor's Degree at a four-year university or a two-year program right here at SCC, we've got what you need. Some classes are offered at SCC, some online, and others are right at your high school. Talk to your high school counselor for more information. Here are courses that are positioned together to help you fast-track your program completion.

Click on the interactive links if you are on a computer for more information and course descriptions.



*"You not only get to expand your knowledge, but you also get the real feel of college classes. It saves you so much money – which parents love to hear – and it allows you to get a jump start."*

Everlee Harvey, Central Lee High School



**COMPLETE  
SCC COURSES  
IN HIGH SCHOOL**



**ATTEND SCC  
TO COMPLETE  
ASSOCIATE'S DEGREE  
WITHIN 2 YEARS**



**TRANSFER  
OR START  
YOUR CAREER**

## **CONTINUE AND FINISH WHAT YOU STARTED!**

No matter what your interests are, SCC is a great place to build a foundation for a successful education and career path.

### **WHY SCC?**

#### **QUALITY EDUCATION**

With small class sizes, experienced faculty, state-of-the-art facilities, internship possibilities, and even FREE tutoring, SCC offers students an exceptional academic experience.

#### **AN ASSIGNED STUDENT SUCCESS ADVOCATE**

An assigned Student Success Advocate can help you select classes and pathways to fit your education and career goals.

## AGRICULTURE ACADEMY

The agriculture industry impacts every person on earth. While production agriculture (farming) is often the first thing that comes to mind when people think of ag jobs, it makes up only one percent of the careers in this industry. Agri-business, research, agronomy, and conservation are just some of the job specializations open to Agriculture degree grads.

### ONLINE\*

FL23	AGB-235 Introduction to Agriculture Markets
	AGC-216 Career Seminar
	AGS-113 Survey of the Animal Industry

SP24	AGA-181 Introduction to Crop Science
	AGB-330 Farm Business Management
	AGB-336 Agricultural Selling

\*Several of these classes are also offered at high schools and on our campuses.

The Modern Food Production certificate is awarded after successful completion of these six courses.

## CONSTRUCTION TECHNOLOGY – CARPENTRY

The construction industry has drastically modernized over the years, but there will always be a need for skilled craftsmen. Master your skills through a mix of classroom learning and real-world projects on actual construction sites.

### SCC WEST BURLINGTON CAMPUS

FL23	CON-147 Carpentry I	7-8:50 am	Monday thru Friday
	ENG-110 Writing for the Workplace	Online	Online
SP24	CON-148 Carpentry II	7-9:50 am	Mon/Wed/Fri
	CAD-101 Introduction to CAD	Online	Online

## BUSINESS TRANSFER ACADEMY

Every industry includes an aspect of business. From insurance to education to manufacturing and museums. They are all managed using essential business skills. The Business Transfer Major is designed to seamlessly transfer into the business majors at the Iowa Regent Universities (Iowa State University, University of Iowa, and University of Northern Iowa). SCC has established 2+2 articulation agreements with other four-year institutions for this transfer major.

### ONLINE\*

FL23	MGT-101 Principles of Management
	MAT-156 Statistics
	ECN-130 Principles of Microeconomics

SP24	BUS-185 Business Law I
	PSY-111 Introduction to Psychology
	ECN-120 Principles of Macroeconomics

\*Several of these classes are also offered at high schools and on our campuses.

## PRE-ENGINEERING ACADEMY

Do you enjoy building things from scratch? Are you a problem-solver with an eye for detail? Everything created had to be designed first. Computer Aided Design (CAD) is a powerful tool that lets you build models in 2D and 3D virtual environments. Everything is engineered to incredible precision using CAD software. Learn the basics of what it takes to succeed in modern manufacturing and fabrication.

### AT WEST BURLINGTON HIGH SCHOOL

TRIMESTER 1	CAD-101 Introduction to CAD
TRIMESTERS 1 & 2	EGT-400 Introduction to Engineering Design
TRIMESTERS 1 & 2	ARC-113 Architectural Drafting
TRIMESTER 3	CAD-277 Dimensional Modeling I

## WELDING ACADEMY

The Welding program is designed to give students a solid foundation in the principles, practices and usage of both gas and electric welding in the industrial setting. Students get ample practice in welding skills, brazing and flame cutting. Instruction emphasizes production fabrication techniques, maintenance and repair procedures, blueprint reading, properties of metals and inspection methods, among other aspects of the welding trade. SCC is an accredited American Welding Society (AWS) testing facility. Students will have the opportunity to obtain AWS Certifications.

### AT BURLINGTON HIGH SCHOOL

TRIMESTER 1	WEL-111 Welding Blueprint Reading
TRIMESTERS 1 & 2	WEL-160 Arc Welding I
TRIMESTERS 2 & 3	WEL-186 Gas Metal Arc Welding
TRIMESTERS 2 & 3	WEL-192 Gas Tungsten Arc Welding

Upon successful completion of these four classes, students will be awarded the Basic Welding Processes Certificate from SCC.

### AT FT. MADISON HIGH SCHOOL

YEAR I TRACK	WEL-130 Oxyacetylene
	WEL-160 Arc Welding (SMAW)*
	WEL-111 Welding Blueprint Reading*
	WEL-186 Gas Metal Arc Welding*
	WEL-192 Gas Tungsten Arc Welding*
YEAR II TRACK	WEL-164 Arc Welding II (SMAW)
	WEL-172 Advanced Shielded Metal Arc Welding II
	WEL-197 Gas Tungsten Arc Welding - Tube

\* Upon successful completion of these four classes, students will be awarded the Basic Welding Processes Certificate from SCC.

## AUTOMOTIVE TECHNOLOGY ACADEMY

Do you have a mechanical side and a high-tech side? Turn your passion for cars into a career that you can take anywhere. Dealerships, independent shops, and fleet managers need skilled technicians to keep vehicles running at top performance. Our Automotive Technology program is an Automotive Service Excellence (ASE) certified program.

### SCC WEST BURLINGTON CAMPUS

FL23	AUT-106 Introduction to Automotive Tech.	7 - 8:50 am	Mon/Wed/Fri	1st 8 weeks
	AUT-126 Fundamentals of Auto. Servicing	7 - 8:50 am	Mon/Wed/Fri	2nd 8 weeks
SP24	ELT-295 AC/DC Fundamentals	7 - 8:50 am	Mon/Wed/Fri	1st 8 weeks
	AUT-244 Manual Drivetrains	7 - 9:30 am	Tues/Thur	16 weeks
	AUT-190 Hybrid Fundamentals	7 - 8:50 am	Mon/Wed/Fri	2nd 8 weeks

### AT MT. PLEASANT HIGH SCHOOL

YEAR I TRACK	AUT-106 Introduction to Automotive Technology	First Semester
	AUT-126 Fundamentals of Auto. Servicing	Second Semester
YEAR II TRACK	AUT-244 Manual Drivetrains I	First Semester
	AUT-505 Automotive Brake Systems	Second Semester

## AUTOMOTIVE COLLISION REPAIR AND RESTORATION

Restoring damaged vehicles takes equal parts craftsmanship, precision, and a strong work ethic. Hone your craft in our million-dollar auto collision lab and leave with the skills you need to start a great career.

### SCC WEST BURLINGTON CAMPUS

FL23	CRR-100 Intro to the Collision Repair & Refinishing Industry	7:30 am – noon	Saturdays
	ENG-110 Writing for the Workplace	Online	Online
SP24	CRR-106 Fundamentals of Collision Repair & Refinishing	7:30 am – 12:15 pm	Saturdays
	MAT-702 Introduction to Math Applications	Online	Online

## EDUCATION ACADEMY

Interested in being part of the social and intellectual development of children? How about being a coach? The education field might be a great fit for you! Teachers play an essential role in fostering the intellectual and social development of children in their formative years. SCC has a program for whichever age of student you'd like to work with. No matter which program you choose, teachers provide the tools and the environment for their students to develop into responsible citizens.

- SCC's Early Childhood Education (ECE) program is designed to prepare students to secure one of the many careers available in early childhood education.
- SCC's Elementary Education AA and Secondary Education AA degree transfer majors prepare students with a foundation in education principles and expose them to complex problems and relations in the field of education.

### SCC WEST BURLINGTON CAMPUS AND CORSE EARLY CHILDHOOD CENTER

FL23	EDU-240 Educational Psychology	8 - 8:50 am	Mon/Wed/Fri	At SCC WB campus
	EDU-235 Children's Literature	9 - 9:50 am	Mon/Wed/Fri	At SCC WB campus
	ECE-103 Intro to Early Childhood Education	8:30 - 9:50 am	Tues/Thur	At CECC*
SP24	EDU-920 Field Experience	8 - 9:50 am	Mondays	At school sites
	EDU-212 Educational Foundations	7:30 - 9:50 am	Wed/Fri	At CECC*
	ECE-170 Child Growth & Development	8:30 - 9:50 am	Tues/Thur	At CECC*

\*CECC is the Corse Early Childhood Center located in Burlington

## COACHING ACADEMY

The Sport Management Pathway of the Business Administration Associate of Applied Science degree will provide students with the training necessary for one of many careers in the rapidly growing sport and recreation industry. This program will prepare students to work with professional teams, marketing firms, finances, colleges and universities, community recreation departments, health clubs, and fitness centers.

### AT BURLINGTON HIGH SCHOOL

Students will complete the courses required to apply to the Board of Educational Examiners to obtain the Iowa Coaching Authorization which will allow an individual to serve as a coach within the public school setting of Iowa.

TRIMESTER 1	PEC-101 Introduction to Coaching
TRIMESTER 2 / FIRST 8 WKS	PEC-116 Athletic Development and Human Growth
TRIMESTER 2 / LAST 4 WKS	PEC-120 Body Structure and Function
TRIMESTER 3	PET-105 Basic Athletic Training

### AT WEST BURLINGTON HIGH SCHOOL

TRIMESTER 1	PEC-101 Introduction to Coaching
TRIMESTER 2 / FIRST 8 WKS	PEC-116 Athletic Development and Human Growth
TRIMESTER 2 / LAST 4 WKS	PEC-120 Body Structure and Function
TRIMESTER 3	SPT-101 Sport Management

## HEALTH SCIENCE RELATED COURSE WORK

Students interested in a career in the healthcare industry can take courses at one of the SCC Health Sciences Academies. These classes meet requirements for many SCC Health Sciences programs.

### AT SCC WEST BURLINGTON

	EMS	Medical Assistant	Medical Coding & Billing	Nurse Aide	Nursing (PN)	Respiratory Care
HSC-114 Medical Terminology	<b>X</b>	<b>X</b>	<b>X</b>			<b>X</b>
MAP-401 Medical Law & Ethics		<b>X</b>	<b>X</b>			
MAP-431 Human Relations		<b>X</b>	<b>X</b>			
HSC-168 Nurse Aide				<b>X</b>	<b>X</b>	
BIO-168 Anatomy & Physiology I		<b>X</b>	<b>X</b>		<b>X</b>	
BIO-173 Anatomy & Physiology II		<b>X</b>	<b>X</b>		<b>X</b>	
BIO-186 Microbiology					<b>X</b>	<b>X</b>
PSY-111 Intro to Psych	<b>X</b>				<b>X</b>	<b>X</b>
PSY-121 Developmental Psychology					<b>X</b>	

## HEALTH SCIENCES ACADEMY

The Health Sciences Academy gives you the chance to explore a career in the health field while earning college credit before you graduate from high school! This academy will begin to prepare you for entering the healthcare workforce in medical offices, hospitals, laboratories, long term care facilities, and more. Careers in healthcare are in high demand and the job opportunities continue to expand. As new technologies develop, our ability to diagnose and treat patients improves, allowing individuals to live longer, healthier lives.

### AT BURLINGTON HIGH SCHOOL

TRIMESTER 1	HSC-114 Medical Terminology*
TRIMESTER 2 / FIRST 6 WKS	MAP-401 Medical Law and Ethics*
TRIMESTER 2 / LAST 6 WKS	MAP-431 Human Relations*
TRIMESTER 3	HSC-168 Nurse Aide**

\*CPC-170 Patient Access to Healthcare can be taken online in either fall or spring semester. Patient Access Associate Certificate will be awarded upon successful completion of these four classes.

\*\*Students are eligible to take the state certification test that allows work as a Certified Nurse Aide in the state of Iowa.

### AT KEOKUK HIGH SCHOOL

FL23	HSC-114 Medical Terminology*	First Semester
	HSC-168 Nurse Aide**	First Semester
SP24	MAP-401 Medical Law and Ethics*	First 9 weeks of Second Semester
	MAP-431 Human Relations*	Last 9 weeks of Second Semester
	WBL-110 Employability Skills	Second Semester
	HSC-168 Nurse Aide**	Second Semester

\*CPC-170 Patient Access to Healthcare can be taken online in either fall or spring semester. Patient Access Associate Certificate will be awarded upon successful completion of these four classes.

\*\*Students are eligible to take the state certification test that allows work as a Certified Nurse Aide in the state of Iowa.

### AT NEW LONDON HIGH SCHOOL

FL23	HSC-114 Medical Terminology	First Semester
	MAP-431 Human Relations	First Semester
SP24	WBL-104 Exploring Careers: Health Sciences	Second Semester
	HSC-168 Nurse Aide	Second Semester



## RESPIRATORY CARE ACADEMY

Respiratory Care is a specialty field in the health occupation career field. Simply stated, "It deals with everything to do with the heart and lungs from babies through adulthood." This field is growing rapidly and has a great demand for graduates with an associate degree in respiratory care. Respiratory care ranks among the Top 20 fastest growing occupations for the 21st century.

### SCC WEST BURLINGTON CAMPUS

FL23	CHM-122 Introduction to General Chemistry*	9 - 9:50 am AND 8 - 9:50 am Mon/Wed/Fri AND Tues
	HSC-114 Medical Terminology	Course is offered at SCC, online, and some high schools
	ENG-105 Composition I	Course is offered at SCC, online, and some high schools
SP24	PSY-111 Introduction to Psychology	Course is offered at SCC, online, and some high schools
	BIO-186 Microbiology*	9 - 9:50 am AND 8 - 9:50 am Mon/Wed/Fri AND Thur

\*Course can also be taken online.

### SCC KEOKUK CAMPUS

FL23	CHM-122 Introduction to General Chemistry*	Online	Mon/Wed/Fri AND Tues
	HSC-114 Medical Terminology	Course is offered at SCC, online, and some high schools	
	ENG-105 Composition I	Course is offered at SCC, online, and some high schools	
SP24	PSY-111 Introduction to Psychology	Course is offered at SCC, online, and some high schools	
	BIO-186 Microbiology*	9 - 9:50 am AND 8 - 9:50 am Mon/Wed/Fri AND Thur	

\*Course can also be taken online.

## MEDICAL ASSISTANT PROGRAM ACADEMY AND/OR MEDICAL CODING AND BILLING ACADEMY

Medical Assistants are often cross-trained to serve in a number of health care roles including administrative duties and clinical procedures. Many Medical Assistant Positions allow for a great work-life balance, including regular daytime hours, and rewarding work.

### AT BURLINGTON HIGH SCHOOL

TRIMESTER 1	HSC-114 Medical Terminology
TRIMESTER 2 / FIRST 6 WKS	MAP-401 Medical Law and Ethics
TRIMESTER 2 / FIRST 6 WKS	MAP-431 Human Relations

### AT KEOKUK HIGH SCHOOL

FL23 HSC-114 Medical Terminology	First Semester
SP24 MAP-401 Medical Law and Ethics	First 9 weeks of Second Semester
MAP-431 Human Relations	Last 9 weeks of Second Semester

### AT NEW LONDON HIGH SCHOOL

FL23 HSC-114 Medical Terminology	First Semester
FL23 MAP-341 Human Relations	First Semester



## PATIENT ACCESS ACADEMY

Patient Access Associates serve as the first point of contact for patients and their families upon arriving at hospitals, healthcare clinics, medical offices and other healthcare facilities. These professionals perform a variety of essential job duties of processing patient registration, admissions, and scheduling.

### SCC MT. PLEASANT CENTER

FL23	HSC-114 Med Term*	7:45 - 9:05 am	Mon/Wed/Fri
	WBL-104 Exploring Careers: Health	7:45 - 9:05 am	Tuesdays
	MAP-401 Medical Law & Ethics*	7:45 - 9:05 am	Thursdays
SP24	HSC-168 Nurse Aide**	7:45 - 9:05 am	Mon/Wed/Fri
	WBL-154 Job Shadowing	7:45 - 9:05 am	Tuesdays
	MAP-431 Human Relations*	7:45 - 9:05 am	Thursdays

\*Patient Access Associate Certificate will be awarded upon successful completion of these 3 courses as well as CPC-170 Patient Access to Healthcare which can be taken online in either the fall or spring semester.

\*\*Students are eligible to take the state certification test that allows work as a CNA in the state of Iowa.

## NURSE PREP ACADEMY

The Nursing Prep Academy gives you the chance to take pre-nursing courses in high school that apply towards a nursing degree before you graduate from high school! This academy will begin to prepare you for entering the nursing workforce in medical offices, long-term care facilities, urgent care, hospitals, home care, and more.

### SCC WEST BURLINGTON CAMPUS

FL23	BIO-168-105 Anatomy & Physiology I	8 - 8:50 am AND 8 - 9:50 am	Mon/Wed/Fri AND Tues
	ENG-105 Composition I	Course is offered at SCC, online, and some high schools	
	PSY-121-104 Developmental Psychology	9 - 9:50 am	Mon/Wed/Fri
SP24	BIO-173-103 Anatomy & Physiology II	8 - 8:50 am AND 8 - 9:50 am	Mon/Wed/Fri AND Tues
	BIO-186-103 Microbiology	9 - 9:50 am AND 8 - 9:50 am	Mon/Wed/Fri AND Thur
	HSC-168 Nurse Aide	Course is offered at SCC, hybrid, and some high schools	

### SCC KEOKUK CAMPUS

FL23	PSY-121 Developmental Psychology	8 - 8:50 am	Mon/Wed/Fri
	BIO-168 Anatomy & Physiology I	9 - 9:50 am AND 8 - 9:50 am	Mon/Wed/Fri AND Thur
	ENG-105 Composition I	Course is offered at SCC, online, and some high schools	
SP24	BIO-173 Anatomy & Physiology II	TBD	TBD
	BIO-186 Microbiology	TBD	TBD
	HSC-168 Nurse Aide	Course is offered at SCC, hybrid, and some high schools	

# 4-YEAR DEGREES START AT SCC

## THERE IS MORE THAN ONE PATH TO A BACHELOR'S DEGREE.

The university experience can be a lot of fun: football games, apartment living, being far away. But all that fun comes at a cost.

The average student borrows \$30,000 to earn a bachelor's degree. And spends the next 20 years paying it off at nearly \$200/month – that's two decades of their life.

Start at SCC. We'll help you build a strong foundation through our close-knit college experience right here at home. Then be ready to focus on your course of study and savor the experience even more at the next stop.

Oh, and you'll slash the cost of your education along the way.

SCC can save you \$20K or more by earning your AA Degree and then transferring to a 4-year university.

## WHY SCC?

Real-world internships & leadership opportunities in your first year

Strong student support services

Respected health, career, and technical programs

SCC grads qualify for special transfer benefits at many 4-year colleges



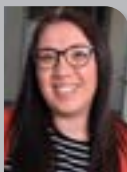
**YOU HAVE QUESTIONS.  
WE HAVE ANSWERS.**

Take a virtual tour, schedule a visit, view programs & costs, call for an appointment.

## STUDENT SUCCESS ADVOCATES FOR CONCURRENT ENROLLMENT STUDENTS



**RACHEL BOYD**  
rboyd@sccciowa.edu  
Burlington H.S.  
Notre Dame H.S.  
Mediapolis H.S.  
Wapello H.S.



**APRIL GERST**  
agerst@sccciow.edu  
West Burlington H.S.  
Danville H.S.  
New London H.S.  
Fort Madison H.S.  
Holy Trinity H.S.  
Home School and  
Out-of-District



**SIERRA HASE**  
shase@sccciowa.edu  
Mt Pleasant H.S.  
Mt Pleasant  
Christian High  
WACO H.S. School  
Winfield-Mt Union H.S.



**ABBY HERRIMAN**  
aherriman@sccciowa.edu  
Keokuk H.S.  
Central Lee H.S.  
Clark Co H.S.  
Home School and  
Out-of-District students



**SOUTHEASTERN**  
COMMUNITY COLLEGE



### WEST BURLINGTON ADMISSIONS

**Call:** (319) 208-5155

**Text:** (319) 250-7144

**Email:** admissionswb@sccciowa.edu

### KEOKUK ADMISSIONS

**Call:** (319) 313-1923

**Text:** (319) 220-3266

**Email:** admissionskeo@sccciowa.edu

### LEANNE KROGMEIER

Director of High School Relations

**Call:** (319) 208-5046

**Email:** lkrogmeier@sccciowa.edu

www.sccciowa.edu

#SCC4ME



It is the policy of Southeastern Community College not to discriminate on the basis of race, color, national origin, sex, disability, age, employment, sexual orientation, gender identity, creed, religion, and actual or potential family, parental, or marital status in its program, activities, or employment practices. If you have questions or complaints related to compliance with this policy, please contact the Director of Human Resources (employment concerns) at 319-208-5063 or the Vice President of Student Affairs (student concerns) at 319-208-5049, 1500 West Agency Road, West Burlington, Iowa 52655, equity@sccciowa.edu or the Director of the Office for Civil Rights U.S. Department of Education, John C. Kluczynski Federal Building, 230 S. Dearborn Street, 37th Floor, Chicago, IL 60661-7204, Telephone: (312) 730-1560 Facsimile: (312) 730-1576, TDD (800) 877-8339, Email: OCR.Chicago@ed.gov.